

# STATE OF CONNECTICUT

## DEPARTMENT OF PUBLIC HEALTH



Dannel P. Malloy  
Governor  
Nancy Wyman  
Lt. Governor

Raul Pino, M.D., M.P.H.  
Commissioner

### EHS Circular Letter 2017-05

TO: Directors of Health  
Chief Sanitarians  
Regional Lead Treatment Centers

FROM: Christine Hahn, Epidemiologist  
Lead, Radon & Healthy Homes Program

DATE: February 22, 2017

SUBJECT: Yamaha Corporation of America Recalls Benches Sold With Grand Pianos Due to Violation of Federal Lead Paint Standard

---

On February 21, 2017 the United States Consumer Product Safety Commission issued a recall for piano bench model number 3 I PM / PAW which was sold with the Yamaha grand piano GB1K PM / PAW. The paint on the interior compartment of the bench contains an excessive level of lead. Consumers should immediately remove the recalled piano benches from areas with children and contact Yamaha Corporation of America for instructions on returning the piano bench for a free replacement bench.

Piano benches were sold from January 2009 through November 2016, with a manufacturing date code between July 2008 and August 2016. The model number, manufacturing date code and "Yamaha Corporation" are printed on a white label on the interior compartment. Consumers can find a list of piano serial numbers sold with the bench that is being recalled at [Yamaha Bench Recall](#).

Consumers with questions may contact Yamaha Corporation of America toll-free at 844-703-5446. The recall can be found at [US Consumer Product Safety Commission: Yamaha Corporation of American Recalls Benches Sold with Grand Pianos](#). You may also contact the Connecticut Department of Public Health Lead, Radon & Healthy Homes Program at 860-509-7299.

cc: Suzanne Blancaflor, M.P.H., M.S., Chief, Environmental Health Section



Phone: (860) 509-7299 • Fax: (860) 509-7295  
410 Capitol Avenue, P.O. Box 340308  
Hartford, Connecticut 06134-0308  
[www.ct.gov/dph](http://www.ct.gov/dph)

*Affirmative Action/Equal Opportunity Employer*



Recalled piano bench 3 I PM / PAW sold with Yamaha grand piano model GB1K PM / PAW



Location of model number and date code on recalled piano bench

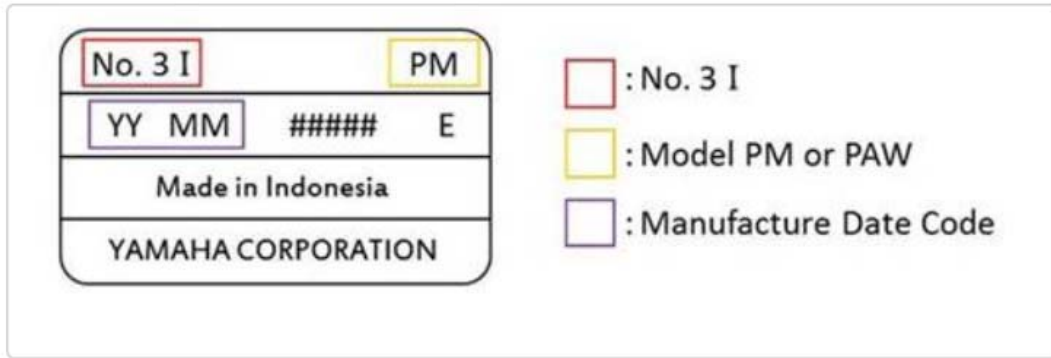


Chart explaining information on piano bench label



Closeup of label on piano bench